

# Welcome to the West Area Planning Committee

- This planning committee meeting is held in public but it is not a public meeting.
- There will be an opportunity for the public to address the committee on each application.
- 67 If you wish to speak for or against a planning application, you need to have either requested it in advance, or hand in one of the available speaker forms, or speak to the clerk.
- Information on meeting protocol and conduct at the committee is set out in the Code of Practice.
- This is in the committee agenda just before the first planning application report.

# Site Location Plan

[www.oxford.gov.uk](http://www.oxford.gov.uk)



89



This Plan includes the following Licensed Data: OS MasterMap Black and White PDF Location Plan by the Ordnance Survey National Geographic Database and incorporating surveyed revision available at the date of production. Reproduction in whole or in part is prohibited without the prior permission of Ordnance Survey. The representation of a road, track or path is no evidence of a right of way. The representation of features, as lines is no evidence of a property boundary. © Crown copyright and database rights, 2016. Ordnance Survey 0100031673

Scale: 1:1250, paper size: A4

SUN55 001  
Location Plan

# Rear elevation



[www.oxford.gov.uk](http://www.oxford.gov.uk)



# Relationship with No. 53 Sunningwell Road

70



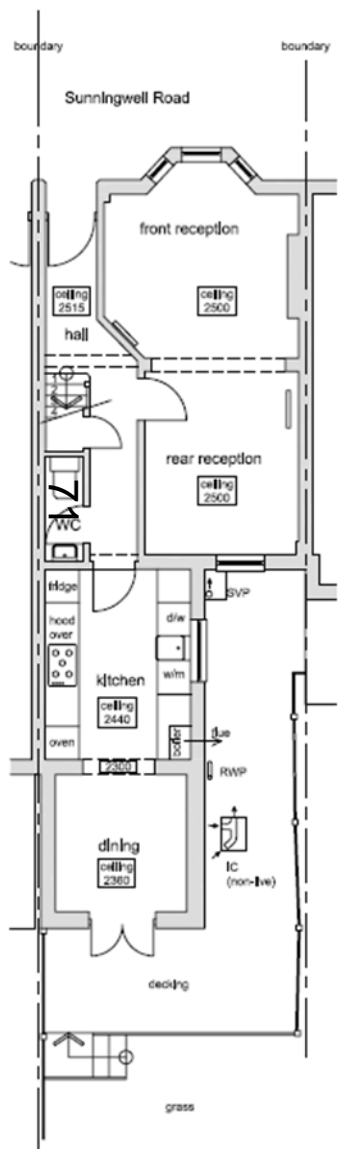
[www.oxford.gov.uk](http://www.oxford.gov.uk)



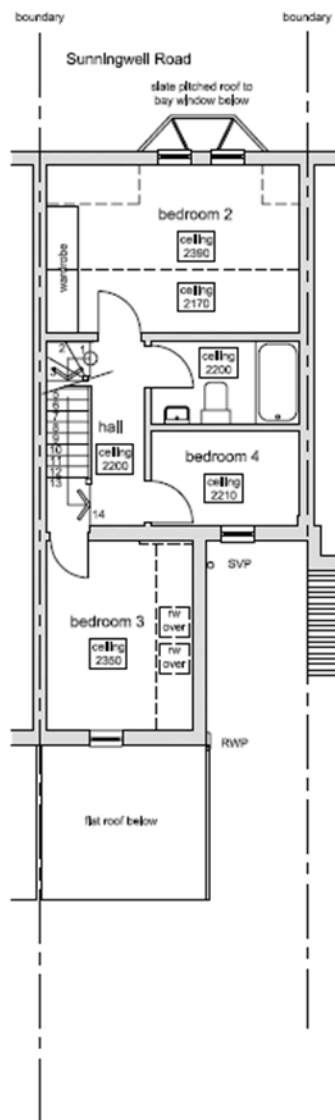
**OXFORD  
CITY  
COUNCIL**



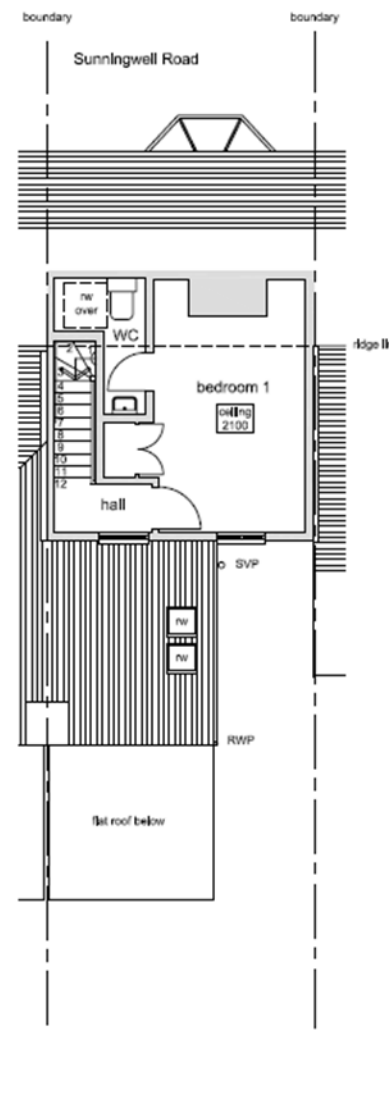
# Existing Floor Plans



ground floor and partial site plan



first floor plan

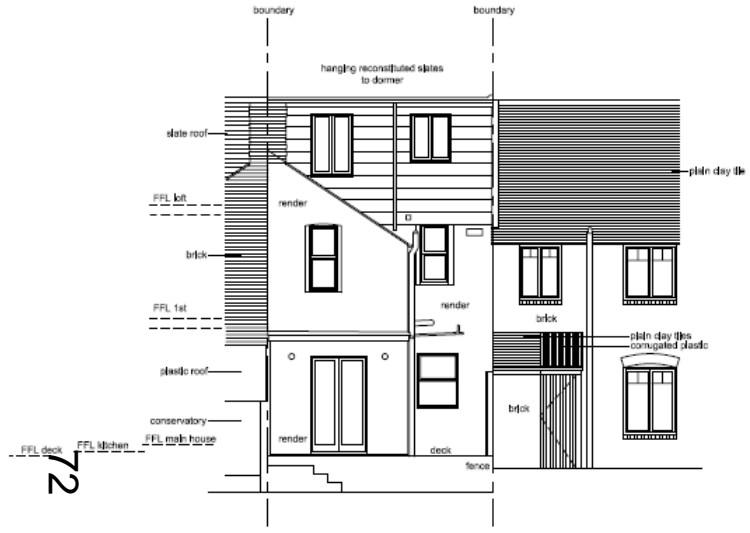


loft level floor plan

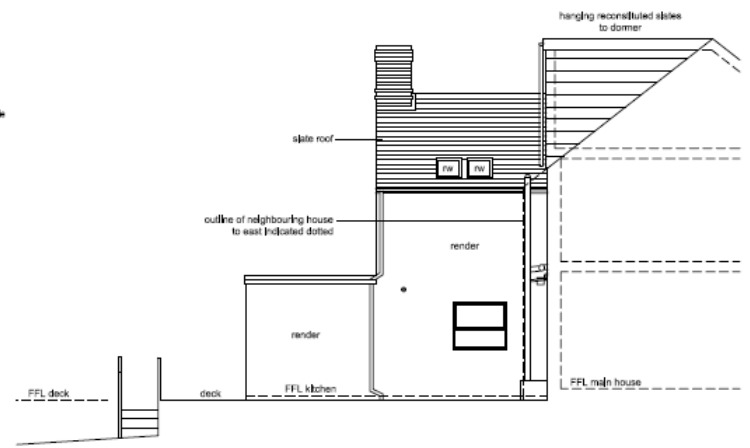
[www.oxford.gov.uk](http://www.oxford.gov.uk)



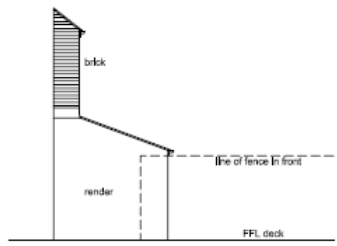
# Existing Elevations



south (rear) elevation



east (side) elevation



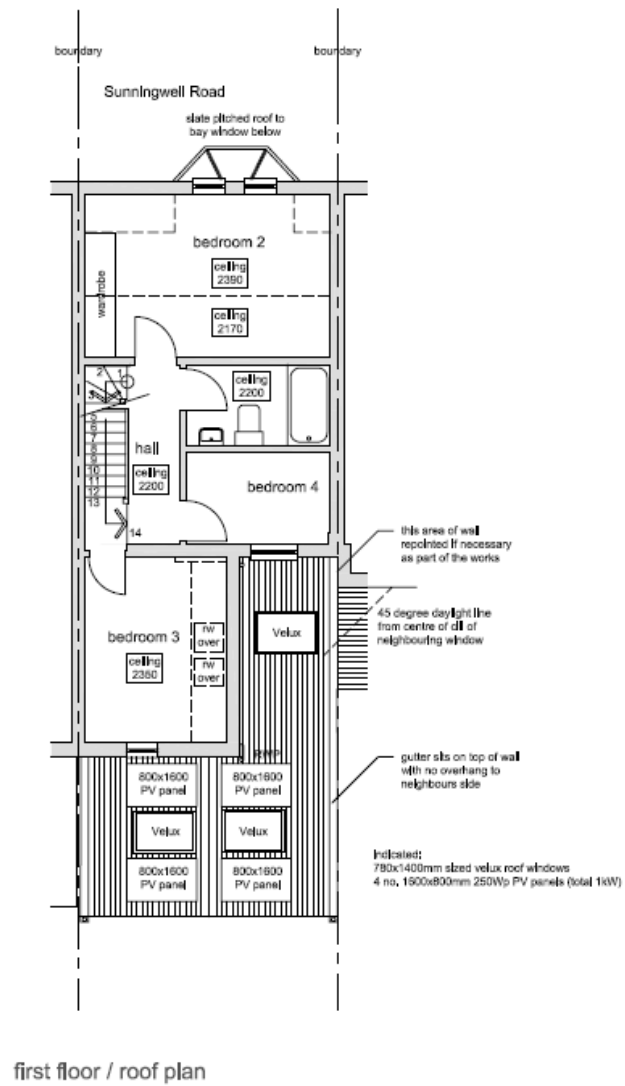
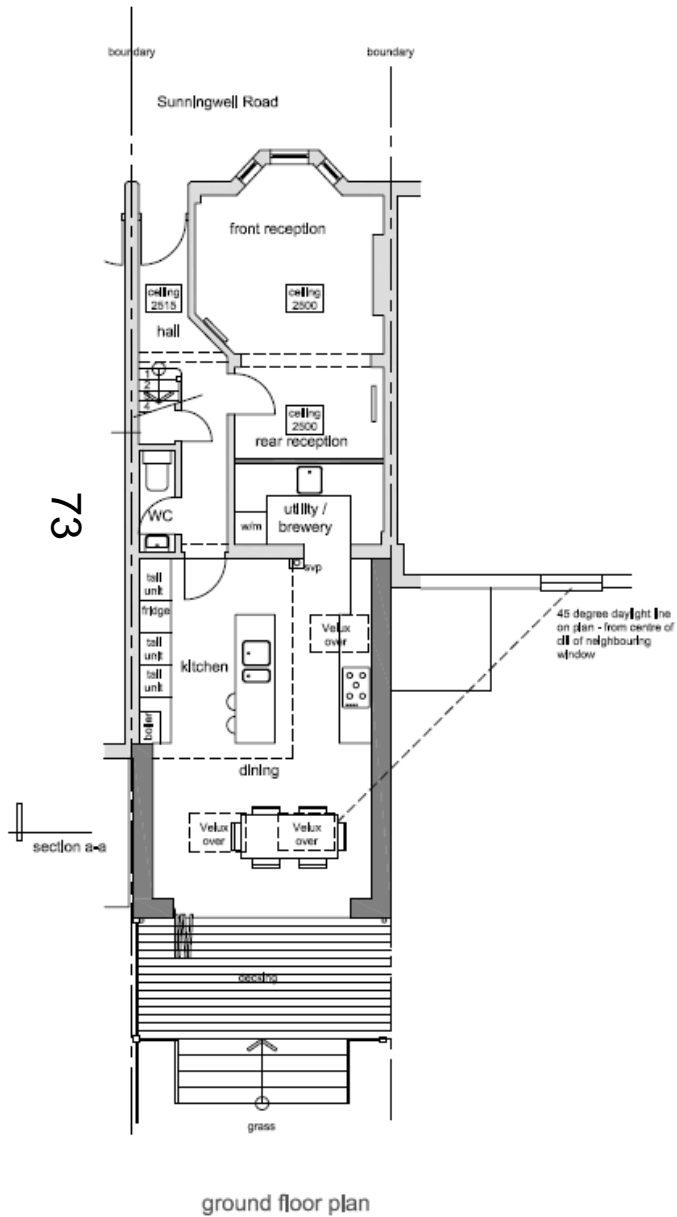
side of neighbour to east

72

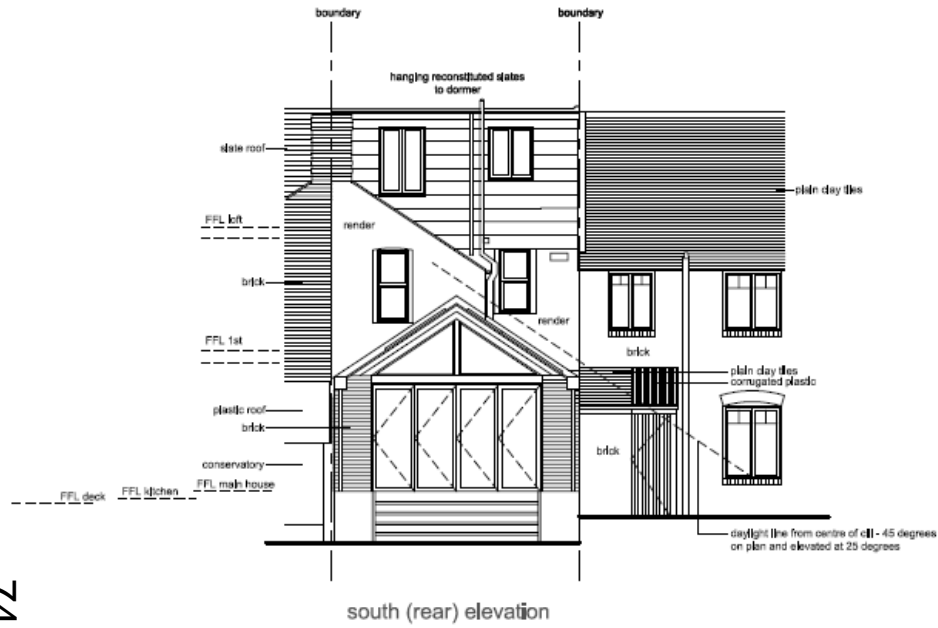


# Proposed Floor Plans

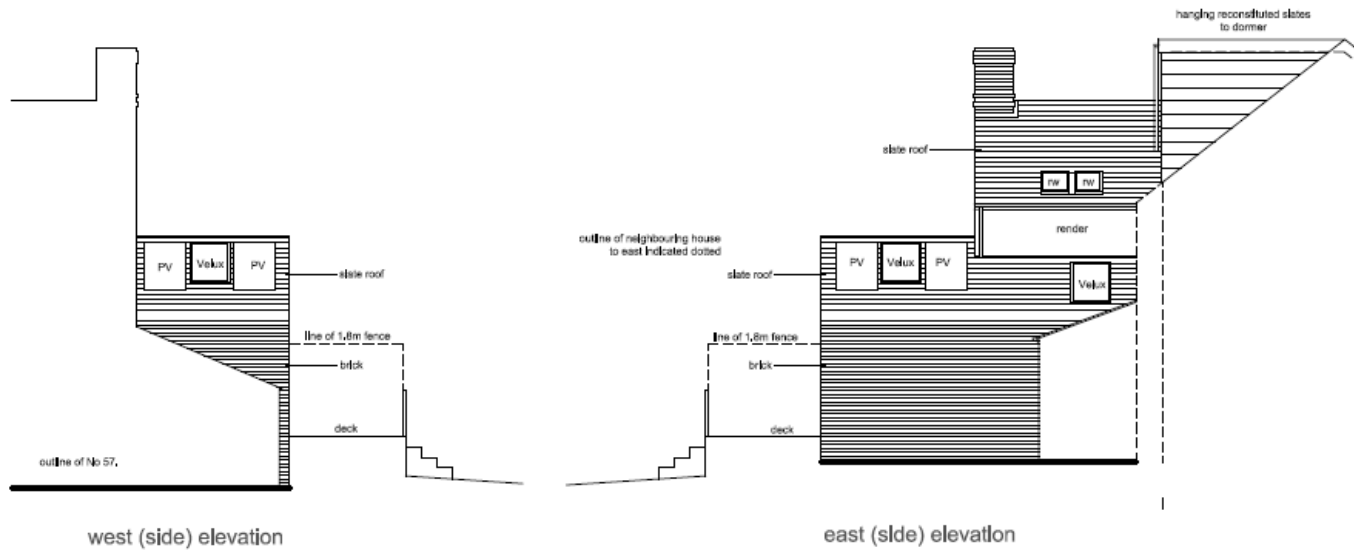
[www.oxford.gov.uk](http://www.oxford.gov.uk)



# Proposed Elevations

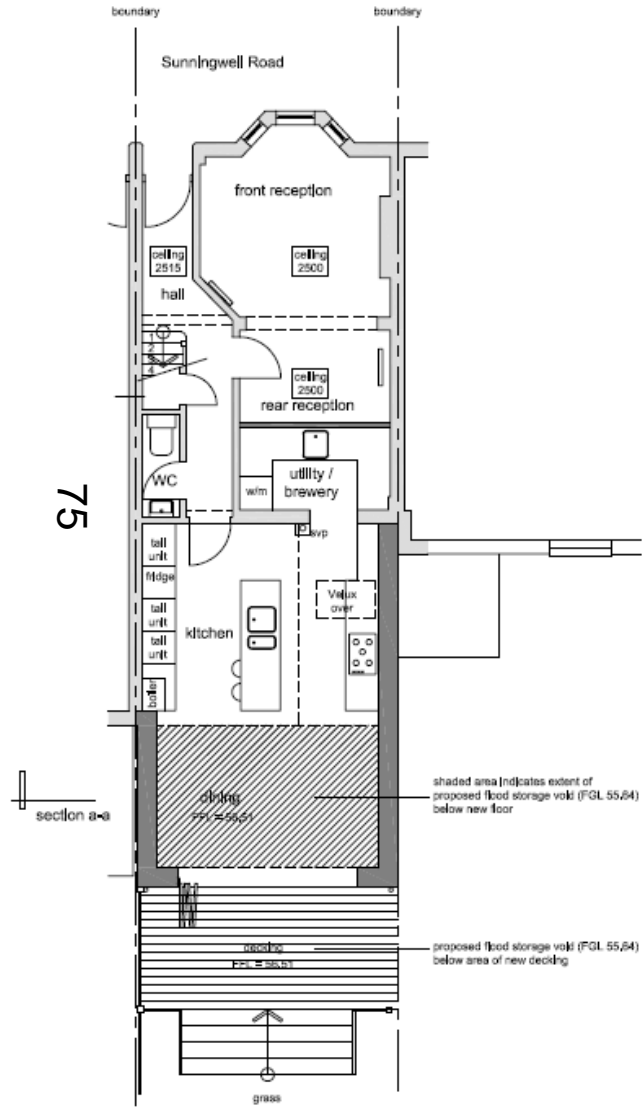


74

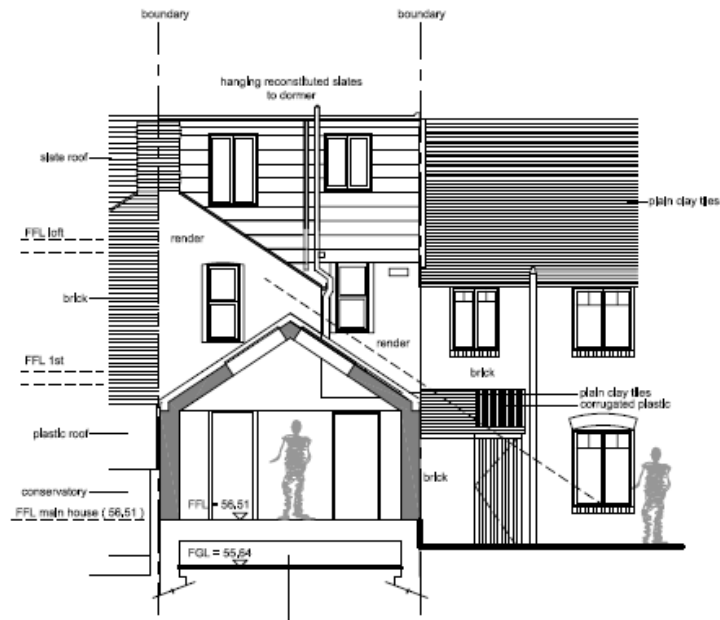




# Proposed Section/Flood Storage



ground floor plan



www.oxford.gov.uk



This page is intentionally left blank